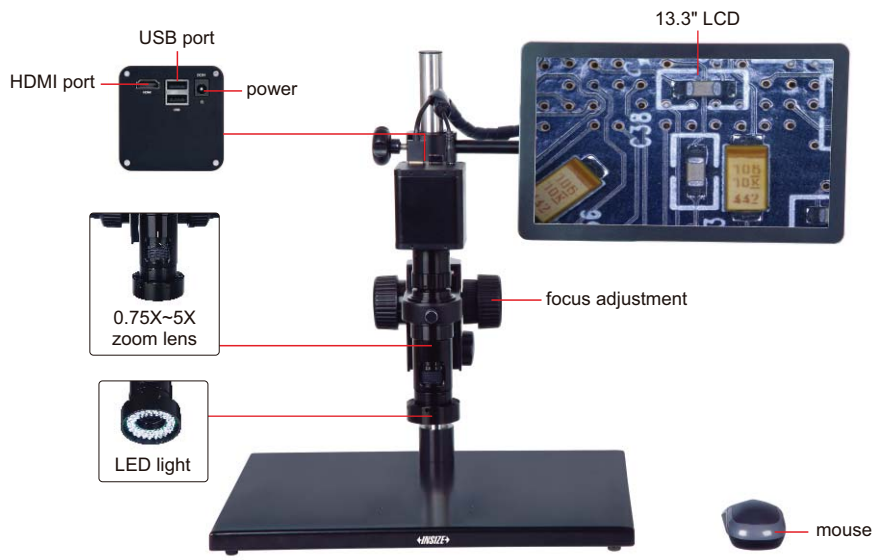


AUTO FOCUS DIGITAL MICROSCOPE (WITH DISPLAY) CODE 5303-AF103

AUTO FOCUS TAKE PICTURES AND VIDEOS MEASUREMENT



16G USB flash disk (included)



0.5X camera adapter (included)

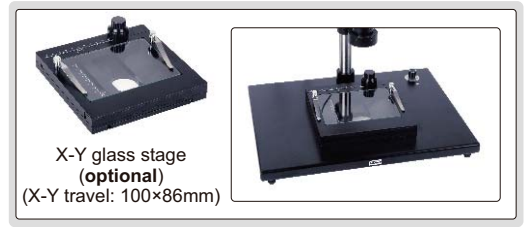


1X auxiliary objective (included)

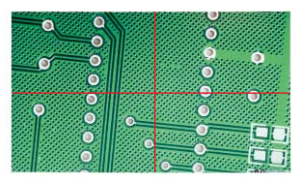


2X auxiliary objective (optional)

- 1080P high-definition image
- Auto focus camera
- Take pictures and videos, saved to USB flash disk
- Picture review, picture compare
- Automatic exposure and white balance
- Brightness, contrast ratio, gain are adjustable
- Display cross hair (blue/green/red/yellow/black/brown colors)
- Built-in software without computer, operation by mouse



X-Y glass stage (optional)
(X-Y travel: 100×86mm)



display cross hair (blue/green/red/yellow/black/brown colors)



1X camera adapter (optional)

MAGNIFICATION, FOCUS DISTANCE AND VIEW FIELD

| Auxiliary objective | Specification | Camera adapter | |
|---------------------|--------------------|-------------------|-------------------|
| | | 0.5X (included) | 1X (optional) |
| 1X (included) | magnification | 20~123X | 40~246X |
| | focus distance | 48~84mm | 48~84mm |
| | view field | 13×7~2.2×1mm | 6.3×3.5~1.1×0.5mm |
| | measuring accuracy | ±0.02mm | ±0.02mm |
| 2X (optional) | magnification | 40~246X | 80~492X |
| | focus distance | 24~42mm | 24~42mm |
| | view field | 6.5×3.5~1.1×0.5mm | 3.3×1.8~0.6×0.3mm |
| | measuring accuracy | ±0.02mm | ±0.02mm |

SPECIFICATION

| | |
|-------------------|---------------|
| Magnification | 20X~123X |
| Sensor | 1/2.8" CMOS |
| Pixel | 2M |
| Resolution | 1920×1080 |
| Frame rate | 60fps |
| Output | HDMI |
| Power supply | power adapter |
| Dimension (L×W×H) | 570×300×430mm |
| Weight | 6.5kg |

AUTO FOCUS DISTANCE

| Zoom objective scale | 0.75X | 1X | 1.5X | 2X | 2.5X |
|----------------------|---------|---------|---------|---------|---------|
| Auto focus distance | 48~84mm | 50~78mm | 55~73mm | 62~71mm | 65~70mm |

| Zoom objective scale | 3X | 3.5X | 4X | 4.5X | 5X |
|----------------------|---------|---------|---------|---------|---------|
| Auto focus distance | 66~70mm | 67~70mm | 68~70mm | 68~70mm | 68~70mm |

STANDARD DELIVERY

| | |
|------------------------|-------|
| Main unit | 1 pc |
| 0.5X camera adapter | 1 pc |
| 1X auxiliary objective | 1 pc |
| Calibration plate | 1 pc |
| 16G USB flash disk | 1 pc |
| White/black plate | 1 pc |
| Mouse | 1 pc |
| HDMI cable | 1 pc |
| Power adpter | 2 pcs |

OPTIONAL ACCESSORY

| | |
|------------------------------------|---------------|
| 1X camera adapter | ISM-DL-CA1X |
| 2X auxiliary objective | ISM-DL-OB2X |
| X-Y glass stage (travel: 100×86mm) | ISM-DL-STAGE |
| X-Y metal stage | ISM-DL-STAGE1 |
| LED light | page 540~541 |
| Auxiliary objective | page 542 |